




# The Dolphin House





# Dolphin House Outdoor Education Centre

We have been offering memorable outdoor experiences for over 20 years, giving young people the opportunity to develop a wide range of skills through taking part in outdoor activities.

**Based in Culzean  
Castle grounds**

**14 miles/27  
minutes south of  
Ayr**

**Most activities  
on site**



An aerial photograph of Culzean Castle and its surrounding coastal buildings. The castle is a large, multi-story stone building with many windows, situated on a hill overlooking the sea. Below the castle, there are several other buildings, including a boathouse, a bunkhouse, a dolphin house, and a bathhouse. The coastline is rocky with waves crashing against the shore. The surrounding landscape is covered in trees with autumn foliage.

**Culzean Castle**

**Boathouse**

**Bunkhouse**

**Dolphin House**

**Bathhouse**



# Aims and Objectives



## CfE

### **Curriculum Mapping**

We support schools to develop experiences and outcomes, incorporating the Curriculum for Excellence into every activity.

## Transferable

### **Life Skills Development**

Support families to develop skills for life  
Foster a positive approach to healthy living  
Promote the concept of sustainability

## Growth

### **Personal Development**

Encourage independence and self reliance  
Build confidence  
Learn new skills  
Develop positive attitudes through co-operative learning

## Fun!

### **Enjoyable experiences**

Encourage curiosity and excitement through outdoor experiences  
Create unique memories



A photograph of a log cabin with a grey roof and a wooden deck. The cabin is surrounded by trees and a flagpole with a blue and white flag is visible. The image is used as a background for the text.

***Fully wheelchair accessible***

***Home away from home***

# The Bunkhouse

Our bunkhouse sleeps 32 people and has had major updates in the past two years, with brand new flooring, heaters, storage space and beds in every room.



# The Dorms







# Social Rooms





# Dolphin House

Built in 1775 as a laundry house for Culzean Castle, it was later converted to an Outdoor Education Centre in 2001.





# Main Room



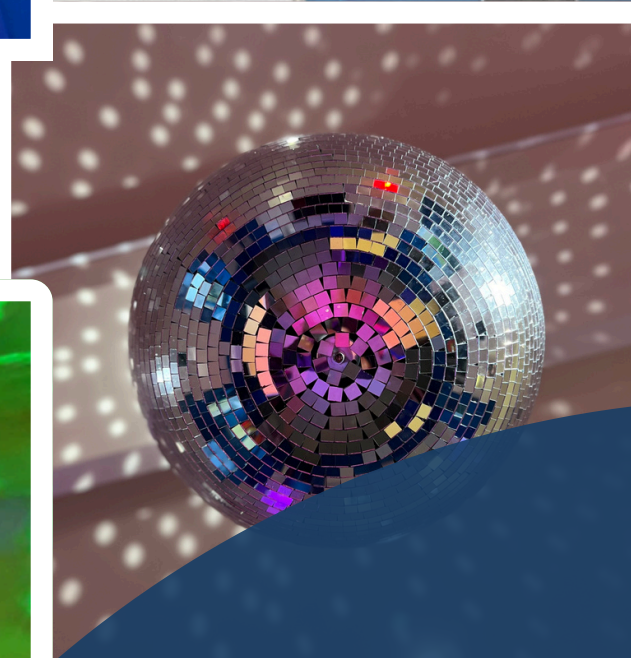
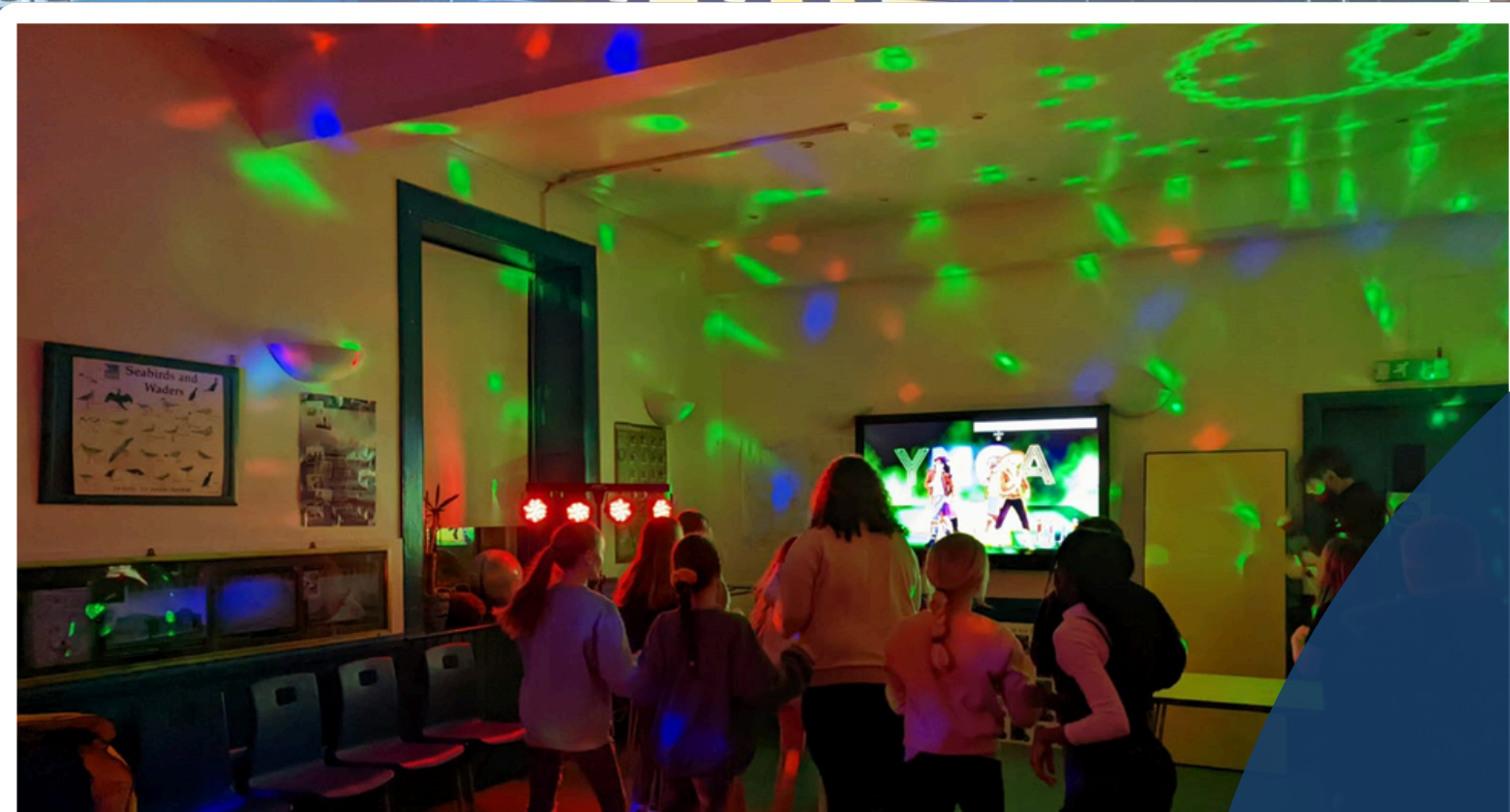
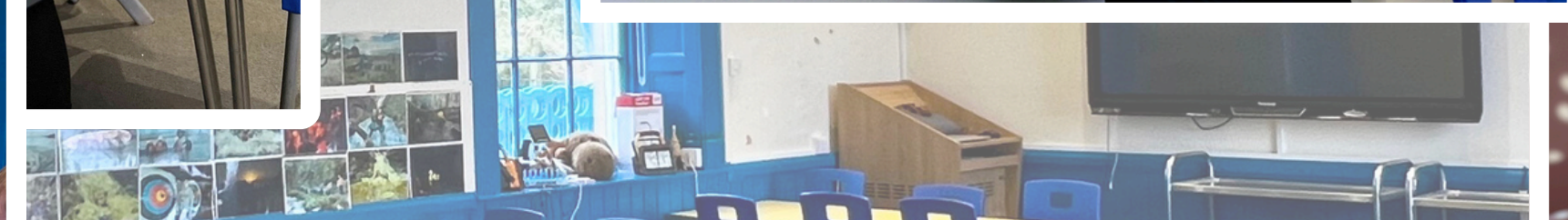




# Dining Room



# Class Room



# Disco Room



# Kitchen

Breakfast, lunch and evening meals are all prepared fresh daily by our experienced catering team.

Packed lunches will be provided when away on hill walks.





# What To Bring



## Bag

A bag you can carry, remember it's only a few nights!



## Old Clothes

Bring old clothes and trainers that you're happy to get muddy and wet



## Kit List

Your school will be sent a kit list of what to bring



# Activities



## Risk Assessed

All activities are inspected by an independent technical advisor (TA) and each activity has an in-depth risk assessment



## Qualified Instructors

Activities are delivered by instructors who are trained and assessed for each activity by either National Governing Body (NGB) or Site Specific by TA



## Seasonal

Some activities are seasonal and weather dependant



## Equipment

All equipment needed will be supplied by Dolphin House and is frequently checked as per manufacturers recommendations



# Abseiling

Our venue is a small secluded  
crag into a small cave  
entrance, right on our  
doorstep





# Archery

Archery happens in the Castle's Boathouse, away from members of the public.





A group of children, mostly wearing red helmets, are lined up on a paved path in a park. They are holding their bicycles. The child in the foreground is wearing a red jacket and glasses. The path is bordered by trees and a wooden bench. In the background, there is a building and a grassy area.

# Biking

There are various routes around the park suitable for riders of all fitness levels and abilities.

Routes can be on smooth level terrain or there are some small hill sections around the park away from walkers.



# Caving

We explore the cave systems found underneath the castle, these are locked and out of bounds to the public.







# Coasteering

Coasteering is the journey from land to sea and back, exploring the coastline. Right on our door step!





# Gorge Walking

Gorge walking is travelling in streams or small rivers through valleys.

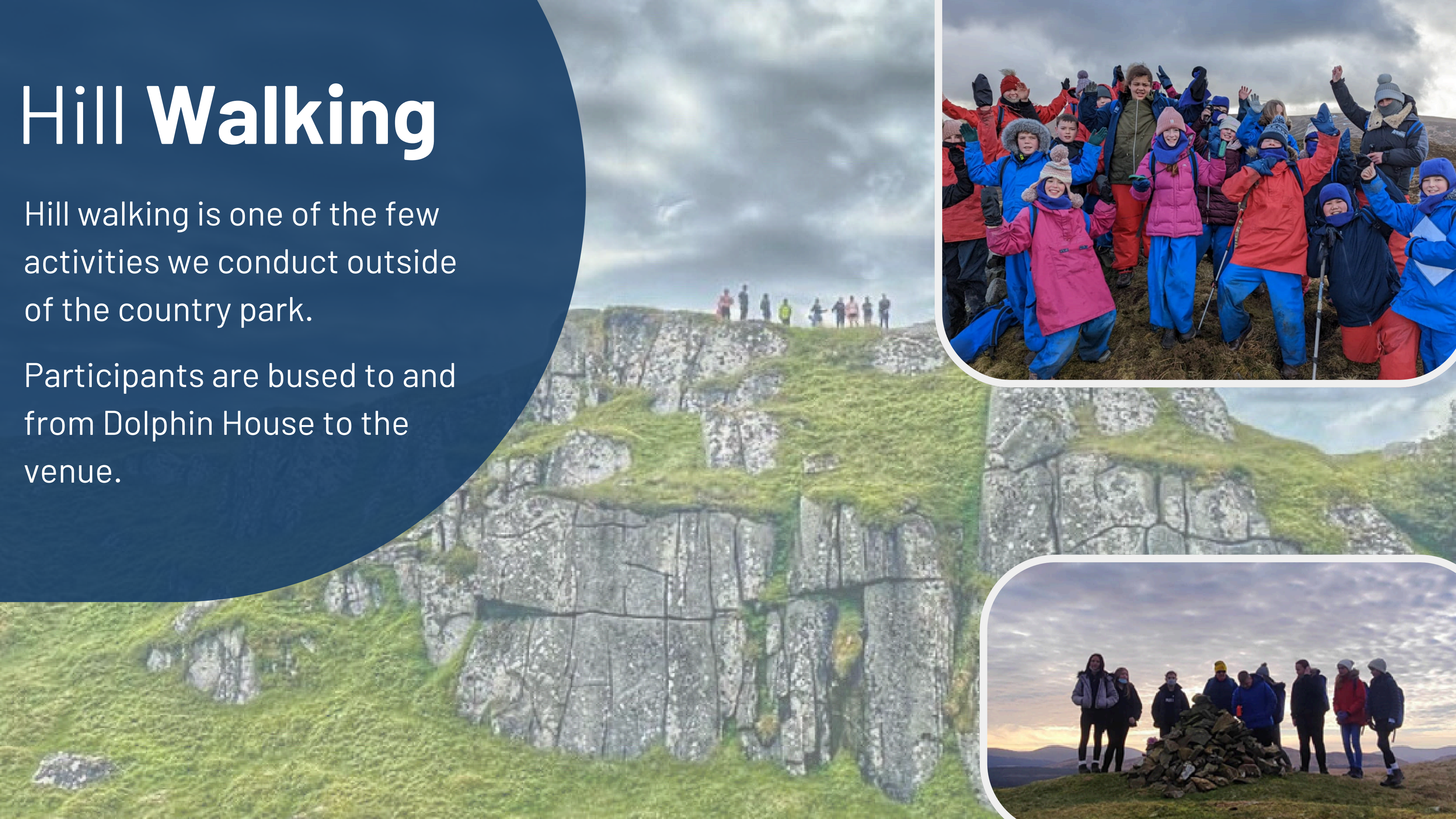




# Hill Walking

Hill walking is one of the few activities we conduct outside of the country park.

Participants are bused to and from Dolphin House to the venue.







# Paddlesports

We use a mix of canoes, kayaks and paddleboards at a variety of venues across Ayrshire.



# Rock Pooling

At low tide the rock pools on our doorstep are home to a variety of marine life.







# Team Building

We have a range of team building challenges to encourage participants to work together





# Evening Activities

We have a range of evening activities after dinner time. These can include a night walk, a bonfire, arts and crafts, a quiz night, beach yoga, and more!





Fully  
Inclusive

Far more than  
**just activities**



# Any Questions?



## Contact Us

Website: **[www.thedolphinhouse.co.uk](http://www.thedolphinhouse.co.uk)**

Email: **[dolphinhouse@south-ayrshire.gov.uk](mailto:dolphinhouse@south-ayrshire.gov.uk)**

Twitter: **[@DolphinHouseSAC](https://twitter.com/DolphinHouseSAC)**

Instagram: **[@DolphinHouse\\_SA](https://www.instagram.com/DolphinHouse_SA)**

Facebook: **Dolphin House Outdoor Education**