

# The Dolphin House



**THRIVING  
COMMUNITIES**

*south*  
**AYRSHIRE**  
COUNCIL  
Comhairle Siorrachd Àir a Deas

# The Dolphin House Outdoor Education Centre



- South Ayrshire Council Outdoor education centre located in the grounds of Culzean Country Park
  - Approx 14 Miles (25-30 mins) drive South from Ayr

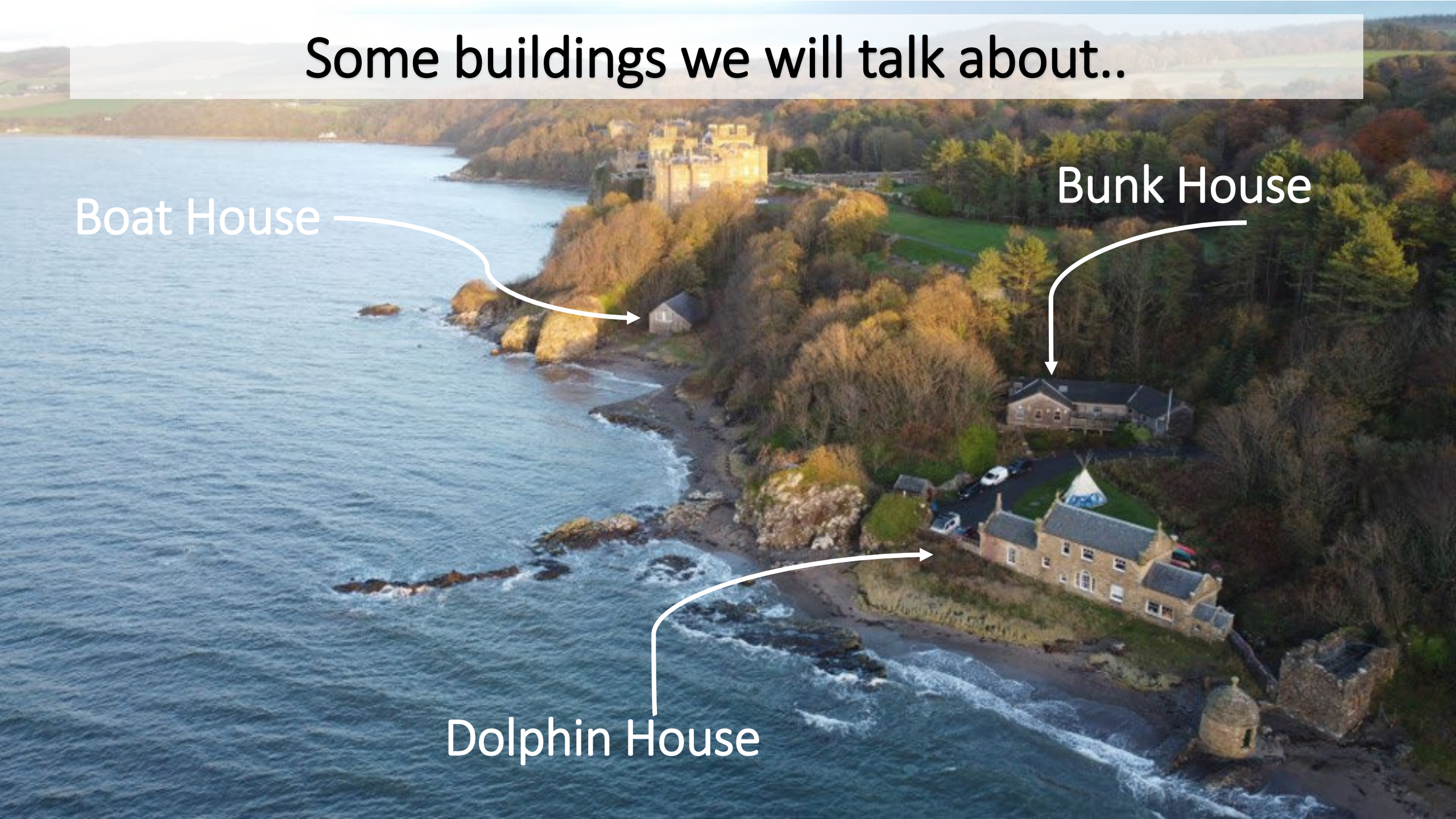


# Some buildings we will talk about..

Boat House

Bunk House

Dolphin House



# OUTDOOR LEARNING AIMS TO:

- Support schools to develop experiences and outcomes
  - Promote the concept of sustainability
- Foster awareness, understanding and respect for the natural environment
  - Stimulate approaches to healthy living
- Develop personal skills and positive attitudes through co-operative learning
  - Support families to develop skills for life

# WE WILL DO THIS BY:

- Providing the opportunity of an outdoor and environmental, residential experience for upper primary school pupils in one of the most beautiful settings in the west of Scotland.
- Exploring aspects of the curriculum including STEM, Learning for sustainability and geography.
  - Providing pupils with the opportunity to be involved in environmental learning leading towards the successful completion of the John Muir Award

# The Bunk House

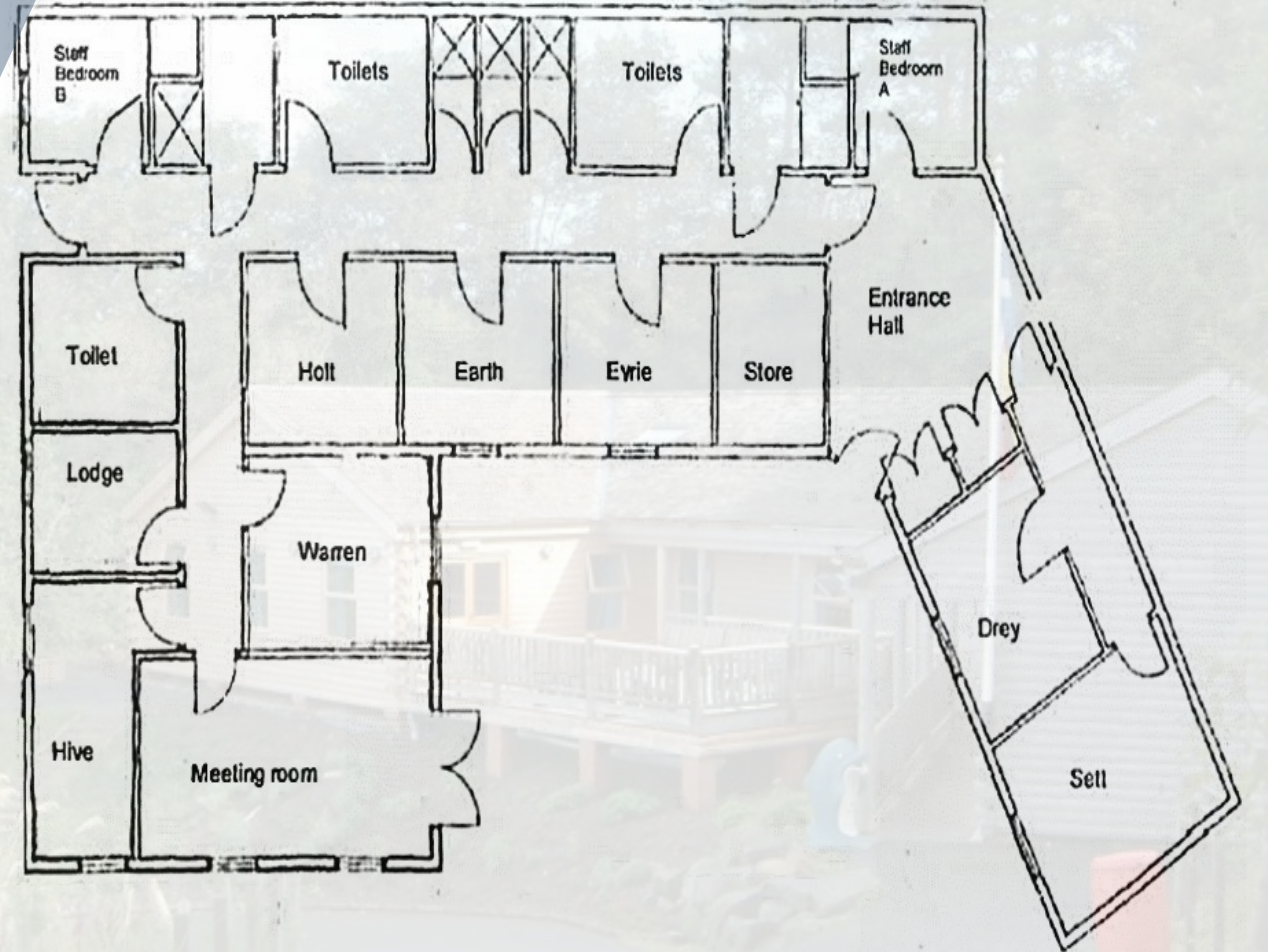
- Home away from home
- Fully wheelchair accessible including WC & Shower room



# The Bunk House

8 Dorms (Sleeps 32)  
2 Staff Dorms (Sleeps 4)

- Sett – Sleeps 6
- Drey – Sleeps 4
- Eyrie – Sleeps 4
- Earth – Sleeps 4
- Holt – Sleeps 4
- Warren – Sleeps 4
- Hive – Sleeps 4
- Lodge – Sleeps 2
- Staff Bedroom A – Sleeps 2
- Staff Bedroom B – Sleeps 2



# THE DORMS





MEETING/CHILL ROOM

# Kitchen

---



Breakfast, lunch & Evening meals are all prepared fresh daily by our cooks Jen & Marion. We don't offer a menu in advance of the visit but will have options available and can cater to all dietary requirements if advised 14 days before the visit.

Packed lunches will be provided when away on hill walks/adventure days

# Function Room

The function room at Dolphin House can be used for various activities.

It can be quickly changed to accommodate the groups and be used as...



Classroom



Dining Room

# Celebration Room/Disco



# Cinema



# Activities

Activities are all risk assessed and delivered by instructors trained and assessed for each type of activity by either National Governing Body (NGB) or Site Specific (in-house) by an independent technical advisor.

Some activities are seasonal and weather dependent

Dolphin House will supply all kit and equipment needed; this is checked frequently as per manufacturer's recommendations.

# What to Pack



Bag or Backpack that your child can carry independently as they may be required to walk within the park carrying this bag to the Dolphin House

# What to Pack

The below lists will also be sent to the school

## Winter

- ☐ Tops
- ☐ Trousers (Not Jeans)
- ☐ Warm Jacket and/or Fleece
- ☐ Warm Jumpers
- ☐ Night Clothes
- ☐ Underwear
- ☐ Thick Socks
- ☐ 2 Pairs of trainers (old)
- ☐ Towel
- ☐ Hat & Gloves
- ☐ Toiletry bag
- ☐ Packed lunch container & drinks bottle

## Summer

- ☐ Tops
- ☐ Trousers (Not Jeans)
- ☐ Jacket or Fleece
- ☐ Warm Jumper
- ☐ Night Clothes
- ☐ Underwear
- ☐ Thick Socks
- ☐ 2 Pairs of trainers (old)
- ☐ 2 Towels
- ☐ Swimwear
- ☐ Toiletry bag
- ☐ Suncream
- ☐ Packed lunch container & drinks bottle





Any Questions ?

# Contact Us



[DolphinHouse@south-ayrshire.gov.uk](mailto:DolphinHouse@south-ayrshire.gov.uk)



Twitter: @DolphinHouse\_SA

Instagram: @DolphinHouse\_SA



[www.Dolphinhouse.co.uk](http://www.Dolphinhouse.co.uk)



CHECK LIST:

- chat

share

- cloud



SHARE

- NETWORK  
- internet  
- connect